

Aerowerks Square Trough Collector



Designed For Extremely Demanding Food Waste Handling.



WATCH
OUR WASTE
COLLECTOR
VIDEO



Salient Features



Water Usage Savings

- Recirculating water reduces fresh water and sewage costs, consuming no more than 2 gallons of fresh water per minute
- Unit is equipped with accurate float sensor to ensure no overflow of water

Design Flexibility

- Trough feed or free-standing configuration
- Side gushers installed in the waste trough for handsfree pre-scrapping, reducing excessive food soiled in the dishes for subsequent washing by the dishmachine
- Large inlet to accommodate steep sloped trough to drive the food wastes down the unit

Large Capacity

- Innovative 2-tiered design to handle large volume of food wastes with multiple basket strainers, making it easier for the operator to swap the basket during the operation

Easy of Use

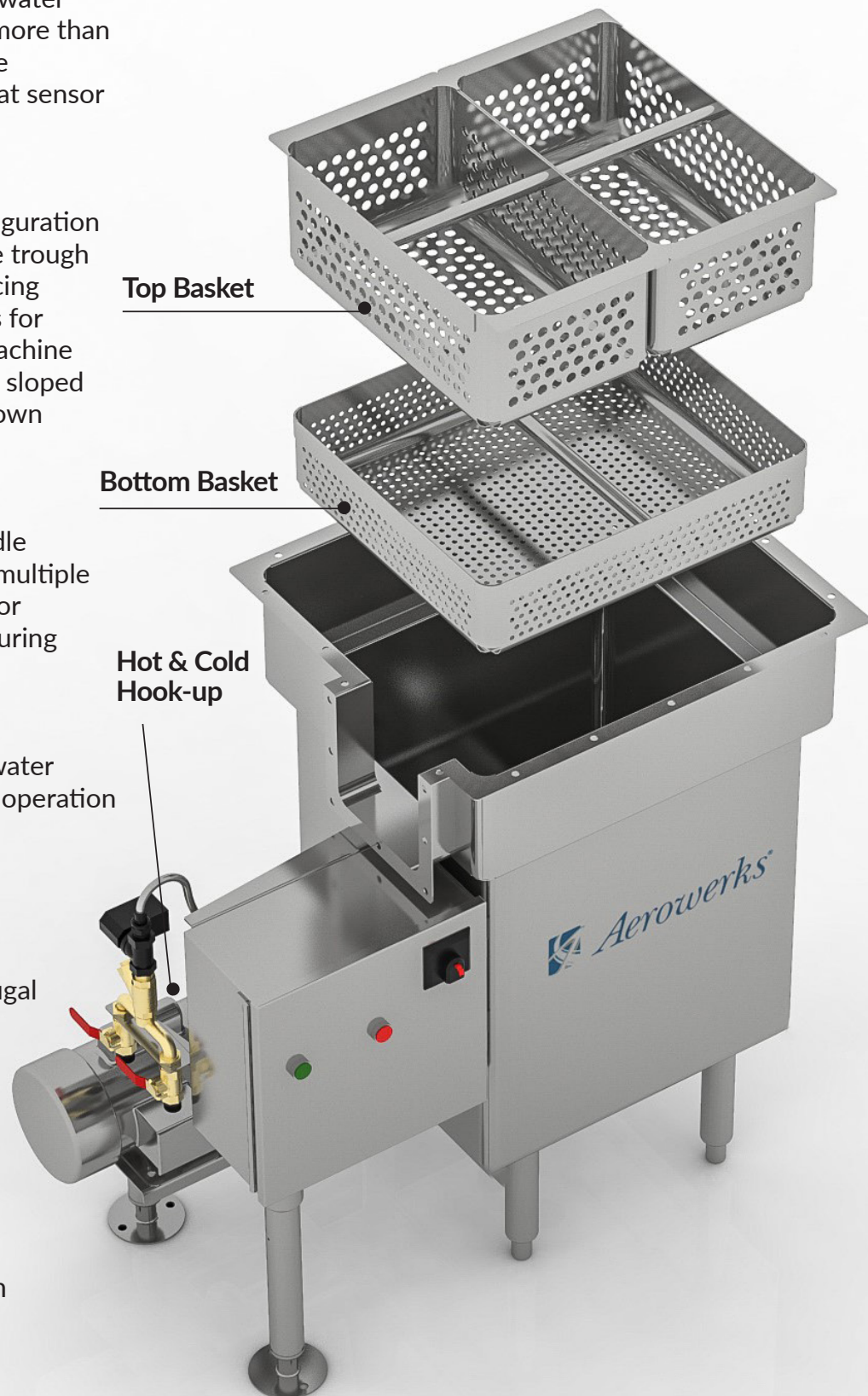
- One push button operation with water filled to the right level to start the operation

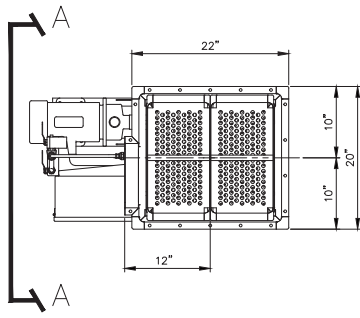
Powerful Robust Design

- Type 300 series stainless, 14 gage stainless steel construction
- Heavy duty stainless steel centrifugal pump and impeller
- Flow rates 70 gallon per minute

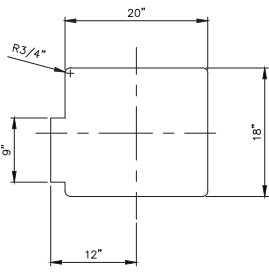
Single point connection for integral system

- Waste collector with optional soiled dishtable furnished by Aerowerks is pre-plumbed to dishtable trough, all gushers with water and check valves from the factory for easy single point field connection

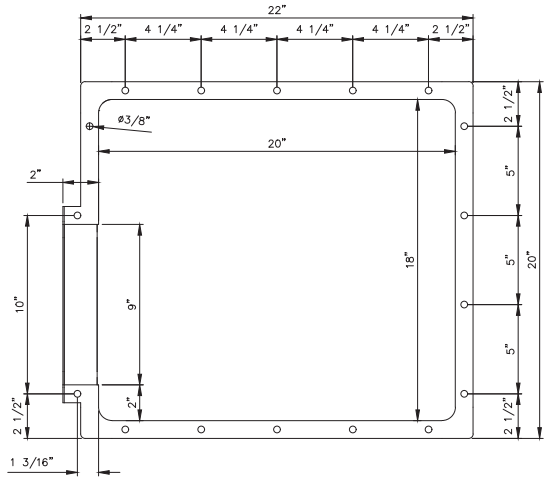




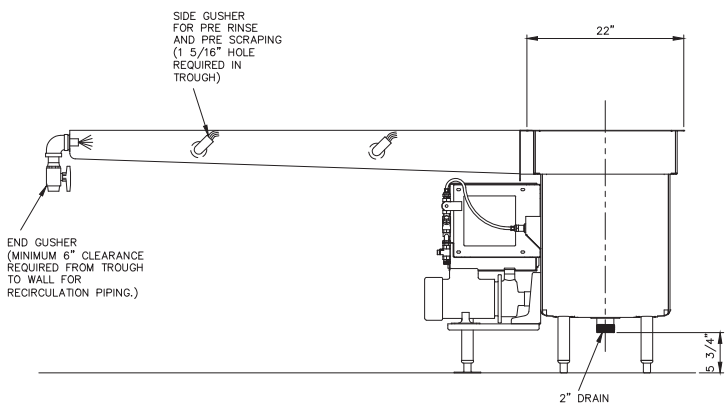
PLAN VIEW



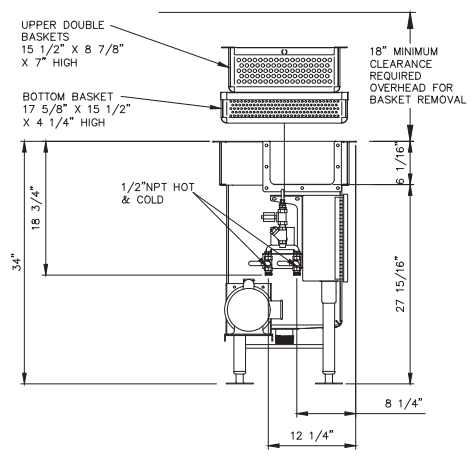
**TABLE CUT OUT
DETAILS**



**TOP FLANGE
DETAILS**

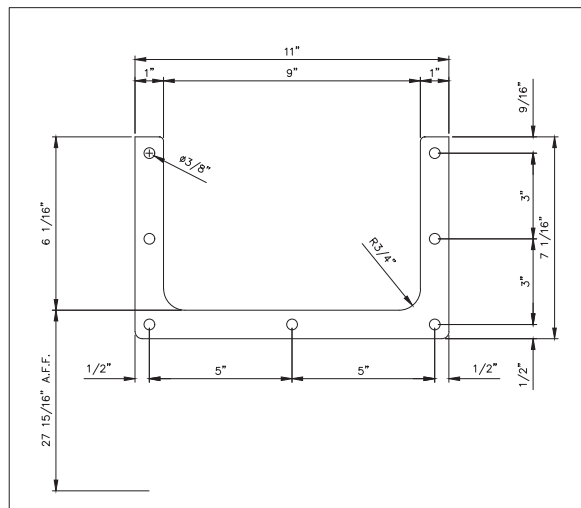


WASTE COLLECTOR DETAILS WITH TROUGH

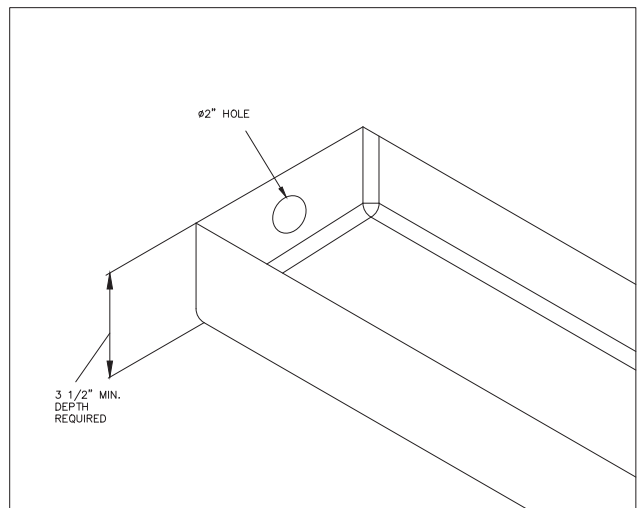


SECTION A-A

TROUGH FLANGE DETAILS



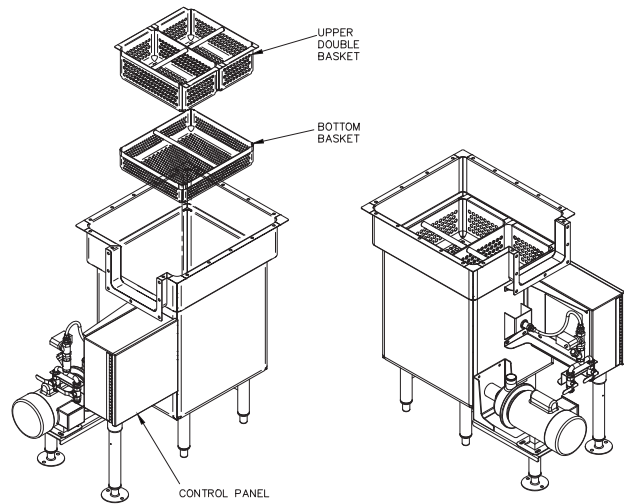
END GUSHER CUT OUT DETAILS



AEROWERKS TROUGH COLLECTOR ELECTRICAL SPECIFICATIONS

AVAILABLE VOLTAGE	115 V	208-230 V	480 V
	1 PHASE	1 PHASE	3 PHASE
	50/60 Hz	50/60 Hz	50/60 Hz
MOTOR HP	1.5	1.5	1.5
FULL LOAD (A)	22	14.5	9.6
SELECTOR	<input type="checkbox"/>	<input type="checkbox"/>	<input type="checkbox"/>

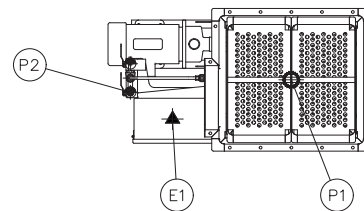
- WATER TIGHT CABLING
- ELECTRICAL SHOCK PREVENTION
- MOTOR WITH OVERLOAD PROTECTION
- 24VDC LOW VOLTAGE CONTROL CIRCUIT



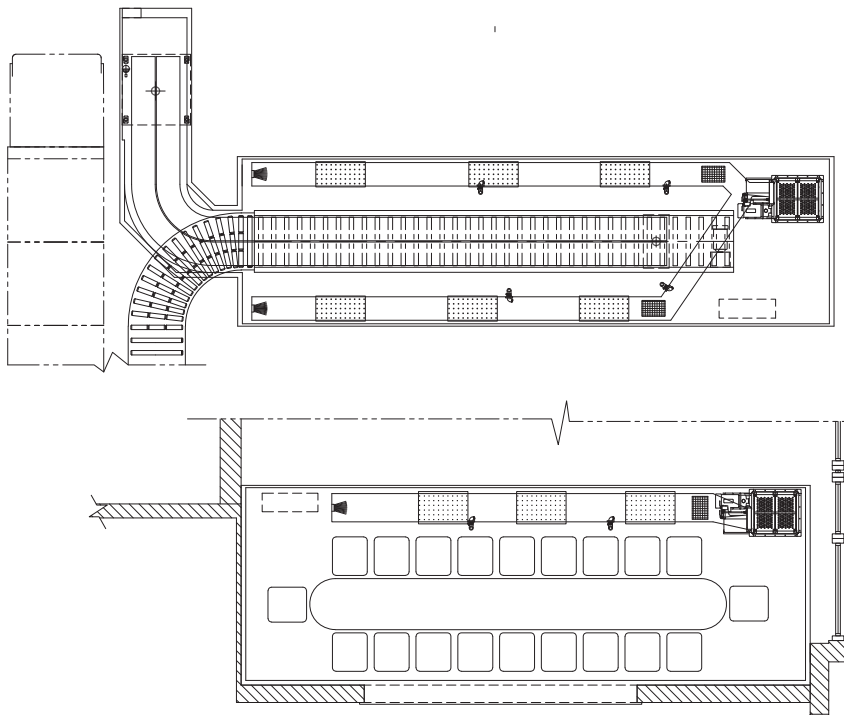
ISOMETRIC VIEWS

PLUMBING & ELECTRICAL CONNECTIONS

P1	2" DIA. DRAIN
P2	1/2" DIA. HOT 7 COLD WATER SUPPLY
E1	TROUGH COLLECTOR ELECTRICAL



TYPICAL AEROWERKS TROUGH COLLECTOR INSTALLATION



25'-0" LONG & 12" WIDE TROUGH WITH SIDE GUSHERS SPACED 3'-0" - 4'-0" APART TO ACCOMMODATE OPERATORS.